

*Key point-Based Periodontal  
Practice:*

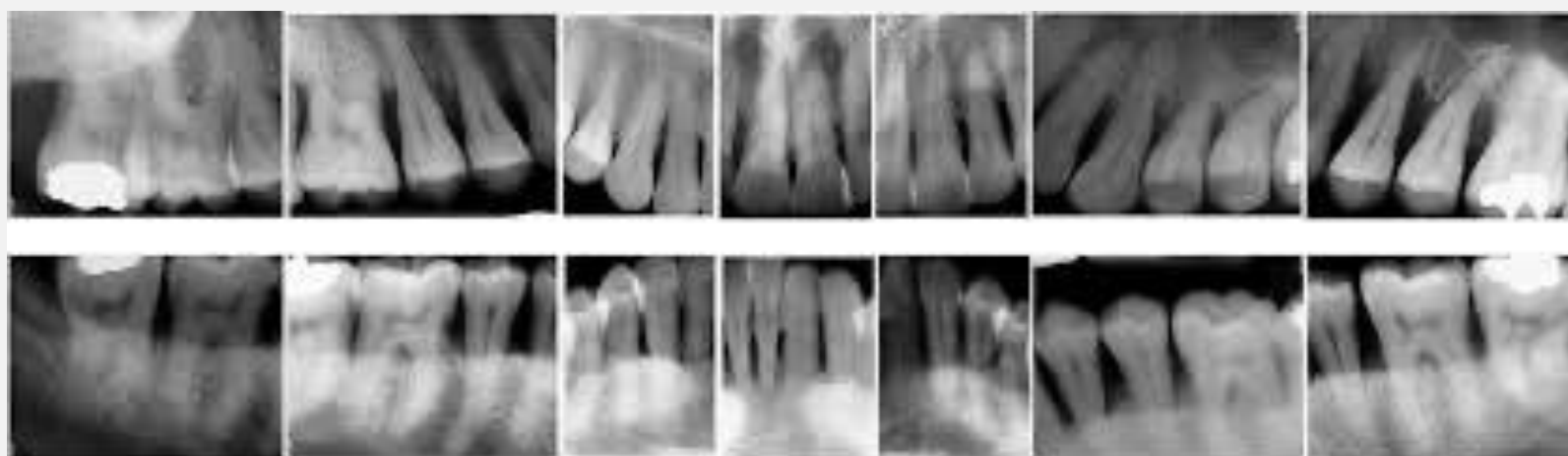
*Periodontitis*

**PERIO 3**

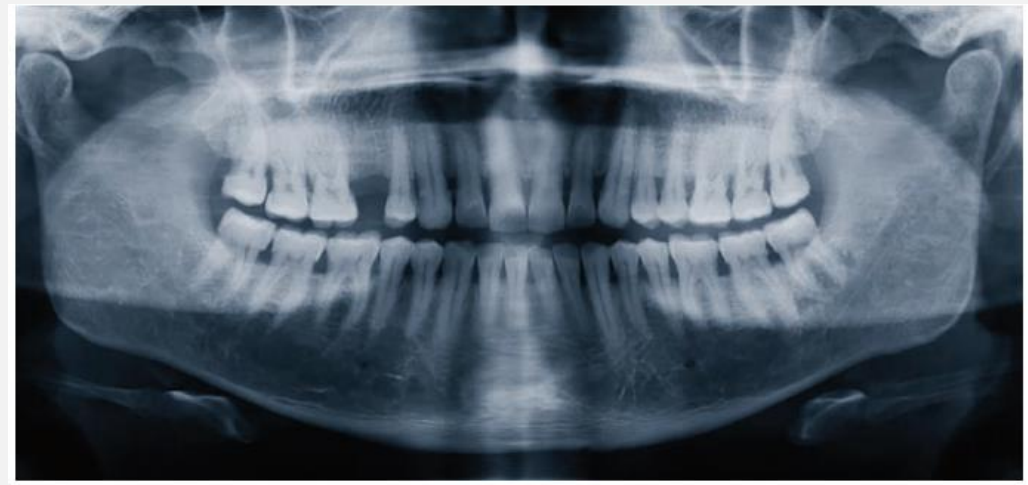
## اسلايد اول:



- بیمار آقای ۵۰ ساله
- حداکثر میزان CAL = ۷ میلی متر
- حداکثر میزان عمق پروبینگ ۸ میلی متر
- خونریزی حین پروب = ۸۷٪



## اسلايد دوم:



**Table 2: Summary of clinical findings.**

Visual assessment:	Gross palatal surface staining; supra- and subgingival calculus evident
Probing depth:	Range 1-5mm
Clinical attachment loss:	Range 0-4mm
Bleeding on probing:	27%
Plaque control:	Poor
Tooth mobility:	Nil
Furcation involvement:	Class I: 1,8; 1,6; 2,6; and 3,6
Tooth loss due to periodontitis:	Nil
Other factors of relevance:	No

### RADIOGRAPHIC FINDINGS:

Bone loss present:	Yes
Pattern of bone loss:	Mostly horizontal
Severity of bone loss:	Range 15-30%
Distribution:	Generalised (>30% teeth)

اسلايد سوم:

